

# It's Your Neighbourhood

## REGISTRATION FORM

Welcome to the East Midlands in Bloom It's Your Neighbourhood campaign. In order to register, please complete this form and give as many details about your group as you have at the moment. It is essential to give us a contact name and phone number. Please read the participants' guidance notes and the assessment form which can be found on our website:

[www.eastmidlandsinbloom.co.uk](http://www.eastmidlandsinbloom.co.uk) or contact Irene Bates, East Midlands in Bloom Secretary for a hard copy.

If you have any questions, please contact Irene on 01332 679598 or email: [info@eastmidlandsinbloom.co.uk](mailto:info@eastmidlandsinbloom.co.uk)

**Please return this form via post or email by Fri 30<sup>th</sup> April 2010.**

Post to: Irene Bates, EMiB It's Your Neighbourhood Secretary, 64 Chaddesden Park Road, Derby DE21 6HD

### Contact Details

(\*Please give details of the leading person in your group or someone who can be easily reached, who has a good understanding of your activities and the people involved. We may contact you for promotional purposes.)

What do you call your group?	
Group leader's name*	
Their address	
Town	
Postcode	
Tel No	
Mobile No	
Email Address	
Name of second contact person	
2 <sup>nd</sup> Tel No	
2 <sup>nd</sup> Email Address	
Address of community group if different to above. Please include post code.	

### About your community

How many people are there in your group?

Are there any children or young people involved?

If so, approximately how many and what age ranges?

What is the nature of your group? (e.g. age range, ethnic diversity etc.)

Are there any community groups, schools or local governments involved? (please state which)

### Events

Describe the area you are improving and the kind of activities you are planning for the year.  
(For e.g. Local Streets to be cleaned and planted up; Early May 2010 – Litter pick& graffiti blitz)

## Benefits of Participation

How did you find out about It's Your Neighbourhood?

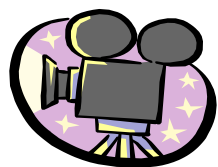
What made you decide to enter this campaign?

What benefits do you hope to get from entering?

*Please continue writing on a separate sheet of paper if you need more space.*

By participating in It's Your Neighbourhood we would like to achieve:

Please tick as appropriate	Totally agree with				Totally disagree with
	1	2	3	4	5
More people getting involved in the local community					
Residents getting together and meeting their neighbours					
Local residents feeling pride in the area					
Local residents feeling safer in the area					
More beautiful greener spaces with more plants					
Cleaner spaces, absence of dog fouling etc.					
A decrease in litter, graffiti, fly posting and vandalism					
A boost to the local economy (increased businesses or increased house prices) and more people wanting to visit					
Finding out more about gardening					
More interaction between the council and residents					
More co-operation between community groups					
More help from local businesses to keep the area attractive					
Increased public awareness of community issues					
Other (Please specify)					



Do you have any pictures of your group working or of your area? If so we would love to see them! Especially before and after photos!

Please email them to [info@eastmidlandsinbloom.co.uk](mailto:info@eastmidlandsinbloom.co.uk) or enclose with this form, or at a later stage when you have them available. Also remember to put them in your diary of events, for reference and to show your assessor of your all year round activities.

**DID YOU KNOW???** As an It's Your Neighbourhood group you have access to a variety of resources to support you and we strongly recommend you make use of those resources. Some of those resources are provided by the Royal Horticultural Society (RHS) and can be accessed on line by visiting: [www.rhs.org.uk/britaininbloom/GardeningInMyCommunity/Gardening\\_in\\_my\\_Community.html](http://www.rhs.org.uk/britaininbloom/GardeningInMyCommunity/Gardening_in_my_Community.html).

In addition, you also have access to the RHS's team of gardening experts; simply send an e-mail with your question to [advice@rhs.org.uk](mailto:advice@rhs.org.uk) using the password **BIBNA** - in the subject line as this is a service normally reserved for RHS members.

**Thank you for taking the time to answer these questions~  
They help us to get to know your group better!**